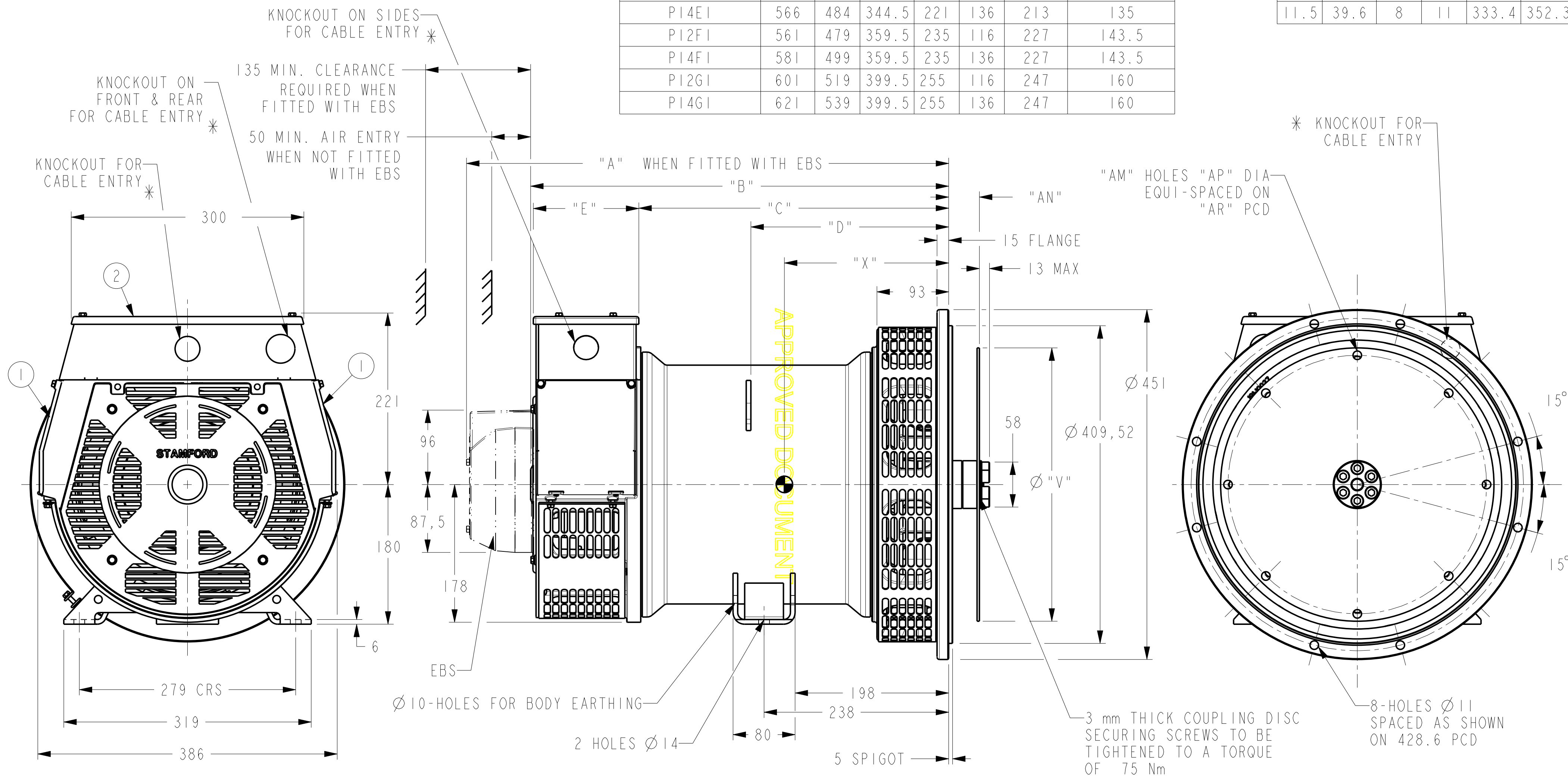


DRG. SIZE C	REL. PHASE P	PART No 19-1002	ISSUE D	IF IN DOUBT-ASK	DIMENSIONS							COUPLING DISC					
					FRAME	HAA"	HAB"	HAC"	HAD"	HE"	HF"	HTT. WT. (K...)	SAB	HAAH"	HABH"	HADH"	HAH"

IF IN DOUBT-ASK
DO NOT SCALE


DIMENSIONS							
FRAME	"A"	"B"	"C"	"D"	"E"	"X"	NETT WT. (Kg)
PI4DI / PI2DI	521	439	319.5	210	116	202	120.5
PI2EI	546	464	344.5	221	116	208	135
PI4EI	566	484	344.5	221	136	213	135
PI2FI	561	479	359.5	235	116	227	143.5
PI4FI	581	499	359.5	235	136	227	143.5
PI2GI	601	519	399.5	255	116	247	160
PI4GI	621	539	399.5	255	136	247	160

COUPLING DISC					
SAE	"AN"	"AM"	"AP"	"AR"	"V"
8	62	6	11	244.5	263.4
10	53.8	8	11	295.3	314.2
11.5	39.6	8	11	333.4	352.3



- ① -REMOVABLE COVER FOR ACCESS TO ELECTRONIC CONTROL
② -REMOVABLE COVER FOR ACCESS TO MAIN TERMINALS
* FOR KNOCKOUT DETAILS REFER TERMINAL BOX DRAWING

4-9346-30	D	SMJ	14.01.08	NOTE FOR KNOCKOUT DETAILS ADDED
4-9111-08	C	DW	9/7/07	ADDED 2-POLES TO TABLE
4-8440-62	B	DW	7.05.07	REMOVE H/J/K CORE FROM G.A
4-8440-42	A	VMR	29.03.07	ORIGINAL ISSUE
MOD.	ISSUE	DRAWN	DATE	MODIFICATION

CONFIDENTIAL		PROPERTY OF		PI D/E/F/G			
CUMMINS GENERATOR		TECHNOLOGIES LTD.		I - BEARING ALTERNATOR			
DIMENSIONS IN MILLIMETRES (MM) AT 20°C		PROJECTION 		SAE 3 ADAPTOR			
				SAE 8 / 10 & 11.5 COUPLING			
UNLIMITED DIMS ± --		DRAWN	VMR	29.03.07	DRG. SIZE C	SCALE 3:10	
		CHECKED	DW	17/3/08	REL. PHASE P	PART No 19-1002	ISSUE D
		APPROVED	SMH	17/3/08	Pro/ENGINEER	SHEET I OF I SHEETS	