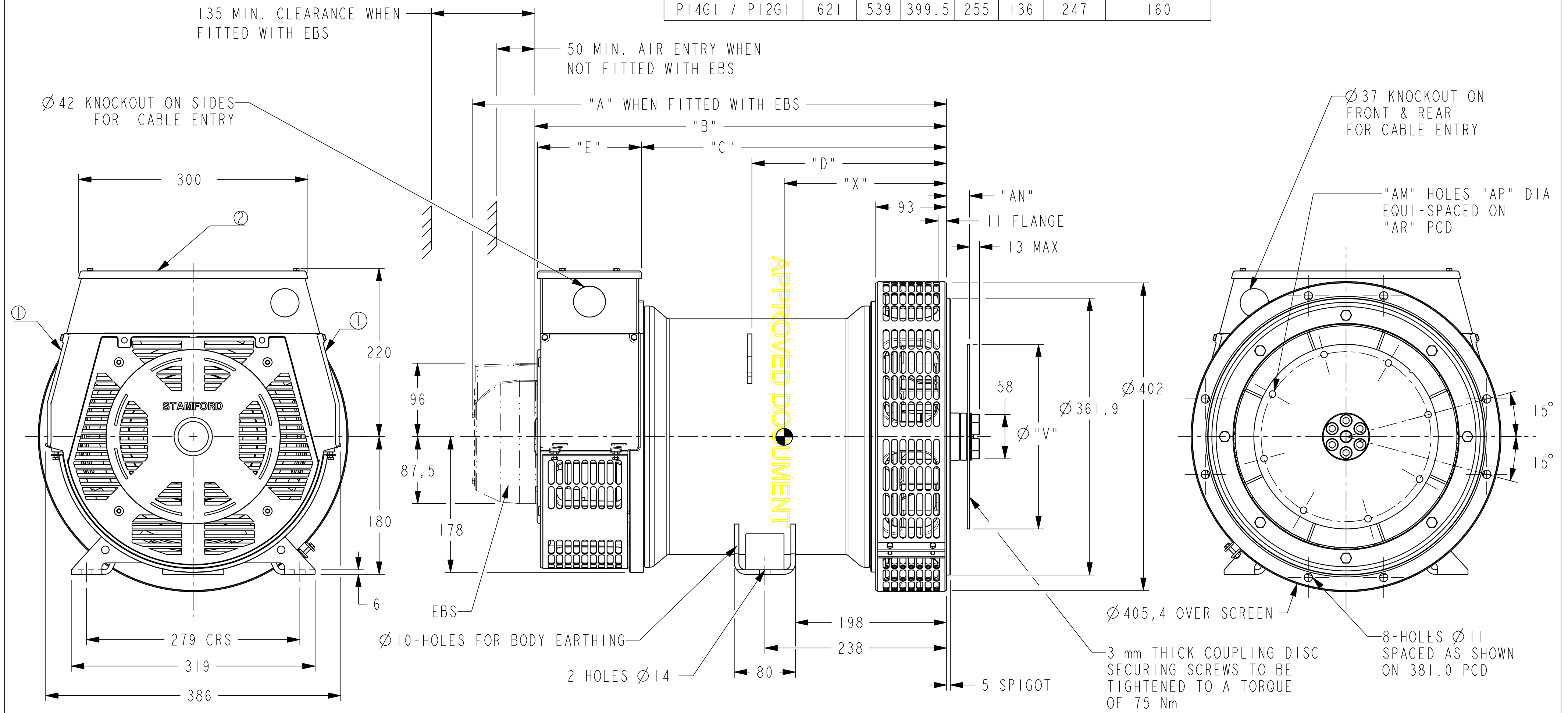


DRG. SIZE C	REL. PHASE P	PART No 19-1003	ISSUE C
----------------	-----------------	--------------------	------------

IF IN DOUBT-ASK
DO NOT SCALE

DIMENSIONS							
FRAME	"A"	"B"	"C"	"D"	"E"	"X"	NETT WT. (Kg)
PI4DI / PI2DI	521	439	319.5	210	116	202	120.5
PI2EI	546	464	344.5	221	116	208	135
PI4EI	566	484	344.5	221	136	213	135
PI4FI / PI2FI	581	499	359.5	235	136	227	143.5
PI4GI / PI2GI	621	539	399.5	255	136	247	160

COUPLING DISC					
SAE	"AN"	"AM"	"AP"	"AR"	"V"
6.5	30.2	6	8.7	200.0	215.8
7.5	30.2	8	8.7	222.2	241.2
8	62	6	11	244.5	263.4
10	53.8	8	11	295.3	314.2



- ① -REMOVABLE COVER FOR ACCESS TO ELECTRONIC CONTROL
- ② -REMOVABLE COVER FOR ACCESS TO MAIN TERMINALS

CONFIDENTIAL		PROPERTY OF CUMMINS GENERATOR TECHNOLOGIES LTD.		PI D/E/F/G I- BEARING ALTERNATOR SAE 4 ADAPTOR SAE 6.5/7.5/8 AND 10 COUPLING	
DIMENSIONS IN MILLIMETRES (MM) AT 20°C		PROJECTION 		DRG. SIZE C	SCALE 3:10
UNLIMITED DIMS ± --		DRAWN VMR	02.04.07	REL. PHASE P	PART No 19-1003
		CHECKED DW	9/7/07	ISSUE C	
		APPROVED DPC	9/7/07	PRO/ENGINEER	SHEET 1 OF 1 SHEETS

MOD.	ISSUE	DRAWN	DATE	MODIFICATION
4-9111-08	C	DW	9/7/07	ADDED 2-POLES TO TABLE
4-8440-62	B	DW	7.05.07	REMOVE H/J/K CORES FROM GA
4-8440-42	A	VMR	02.04.07	ORIGINAL ISSUE