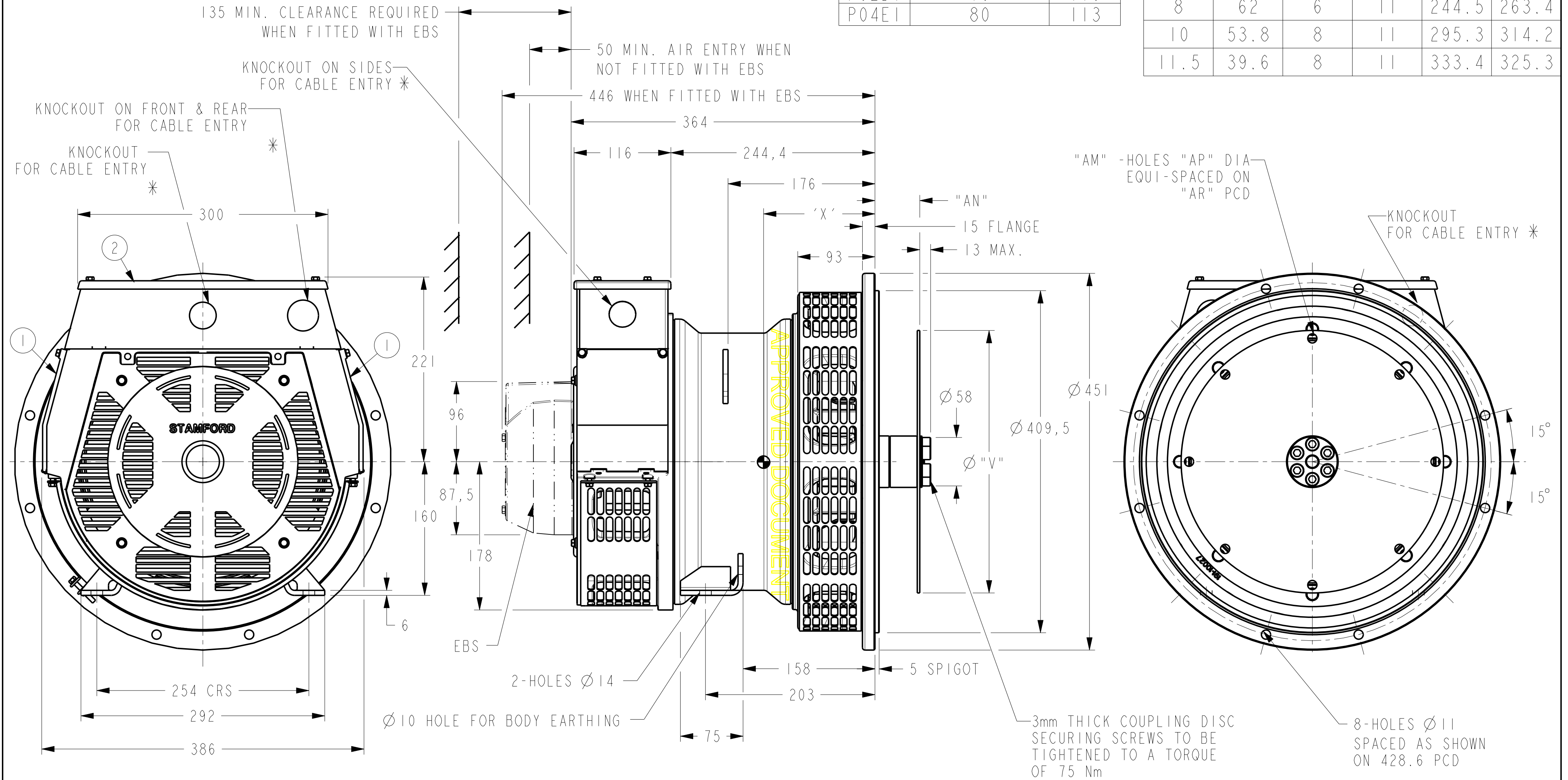


DRG. SIZE C	REL. PHASE P	PART No 19-1008	ISSUE C
----------------	-----------------	--------------------	------------

IF IN DOUBT-ASK
DO NOT SCALE

FRAME	NETT WT. (Kg)	X
P04DI	75	118
P02DI	76	116
P04EI	80	113

COUPLING DISC					
SAE	"AN"	"AM"	"AP"	"AR"	"V"
8	62	6	11	244.5	263.4
10	53.8	8	11	295.3	314.2
11.5	39.6	8	11	333.4	325.3



- ① - REMOVABLE COVERS FOR ACCESS TO ELECTRONIC CONTROL
- ② - REMOVABLE COVER FOR ACCESS TO MAIN TERMINALS
- * FOR KNOCKOUT DETAILS REFER TERMINAL BOX DRAWING

CONFIDENTIAL		PROPERTY OF CUMMINS GENERATOR TECHNOLOGIES LTD.		POD/E 4-POLE . POD 2-POLE 1-BEARING ALTERNATOR SAE 3 ADAPTOR SAE 8/10 & 11.5 COUPLING	
DIMENSIONS IN MILLIMETRES (MM) AT 20°C		PROJECTION 		DRG. SIZE C	SCALE 3:10
UNLIMITED DIMS ± --		DRAWN VMR	09.04.07	REL. PHASE P	PART No 19-1008
		CHECKED DW	17/3/08	PRO/ENGINEER	ISSUE C
		APPROVED SMH	17/3/08	SHEET 1 OF 1 SHEETS	

4-9346-30	C	BJ	22/02/08	NOTES FOR KNOCKOUT DETAILS ADDED
4-9111-08	B	DW	5/7/07	ADDED POD 2-POLE TO TITLE AND TABLE
4-8440-42	A	VMR	09.04.07	ORIGINAL ISSUE
MOD.	ISSUE	DRAWN	DATE	MODIFICATION