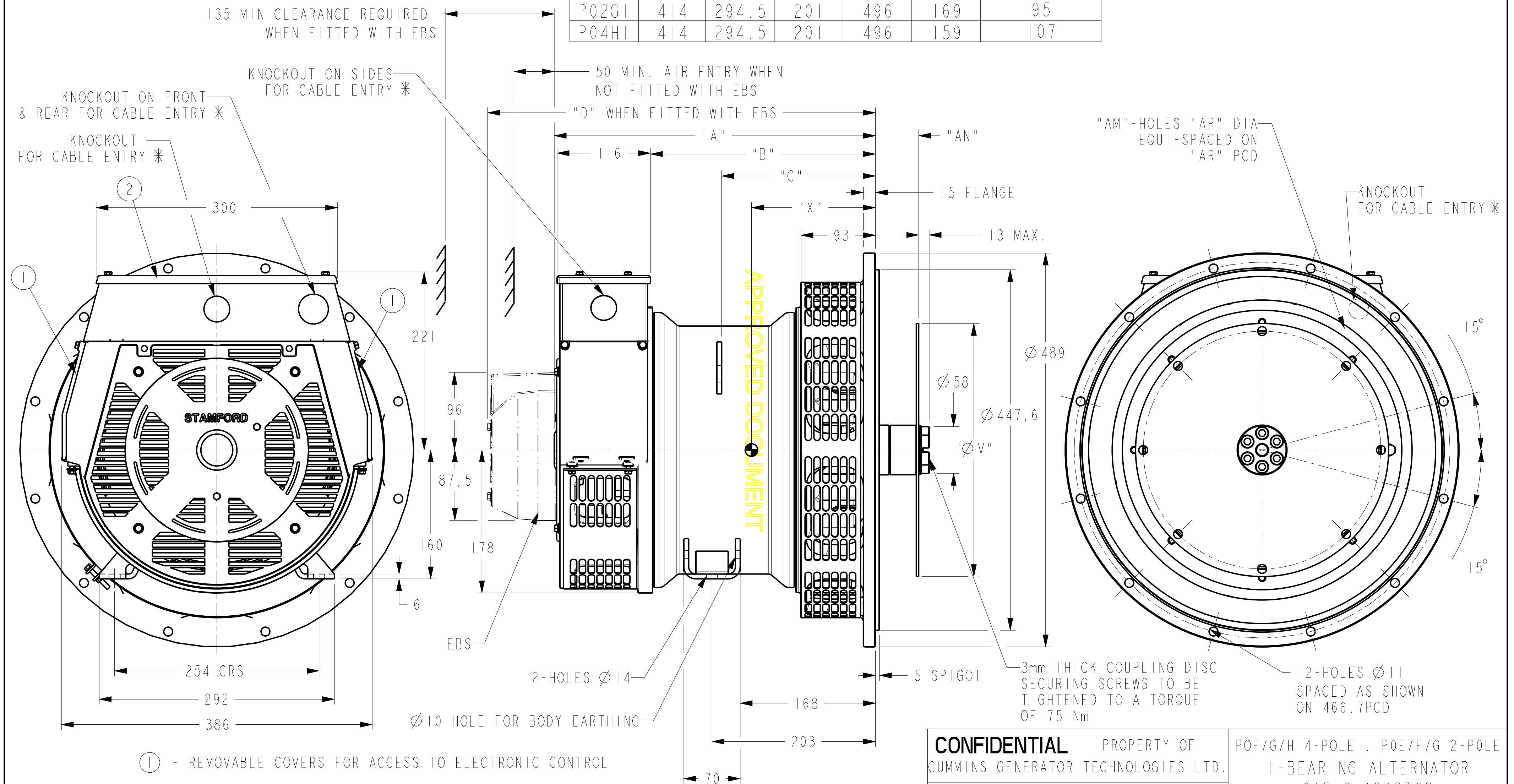


DRG. SIZE C	REL. PHASE P	PART No 19-1011	ISSUE C
----------------	-----------------	--------------------	------------

IF IN DOUBT-ASK
DO NOT SCALE

FRAME	A	B	C	D	X	NETT WT. (Kg)
P02E1	399	279.5	191	481	160	84
P04F1	399	279.5	191	481	157	89
P02F1	399	279.5	191	481	155	90
P04G1	399	279.5	191	481	149	96
P02G1	414	294.5	201	496	169	95
P04H1	414	294.5	201	496	159	107

COUPLING DISC					
SAE	"AN"	"AM"	"AP"	"AR"	"V"
10	53.8	8	11	295.3	314.2
11.5	39.6	8	11	333.4	352.3

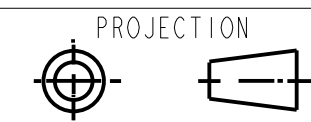


- ① - REMOVABLE COVERS FOR ACCESS TO ELECTRONIC CONTROL
- ② - REMOVABLE COVER FOR ACCESS TO MAIN TERMINALS
- * FOR KNOCKOUT DETAILS REFER TERMINAL BOX DRAWING

CONFIDENTIAL PROPERTY OF
CUMMINS GENERATOR TECHNOLOGIES LTD.

POF/G/H 4-POLE . POE/F/G 2-POLE
1-BEARING ALTERNATOR
SAE 2 ADAPTOR
SAE 10 & 11.5 COUPLING

DIMENSIONS IN MILLIMETRES (MM) AT 20°C



UNLIMITED DIMS ± --

DRAWN	VMR	11.04.07
CHECKED	DW	17/3/08
APPROVED	SMH	17/3/08

DRG. SIZE C	SCALE 3:10
REL. PHASE P	PART No 19-1011
PRO/ENGINEER	ISSUE C
SHEET 1 OF 1 SHEETS	

MOD.	ISSUE	DRAWN	DATE	MODIFICATION
4-9346-30	C	BJ	22/02/08	NOTES FOR KNOCKOUT DETAILS ADDED
4-9111-08	B	DW	5/7/07	ADDED POE/F/G 2-POLE TO TITLE AND TABLE
4-8440-42	A	VMR	11.04.07	ORIGINAL ISSUE