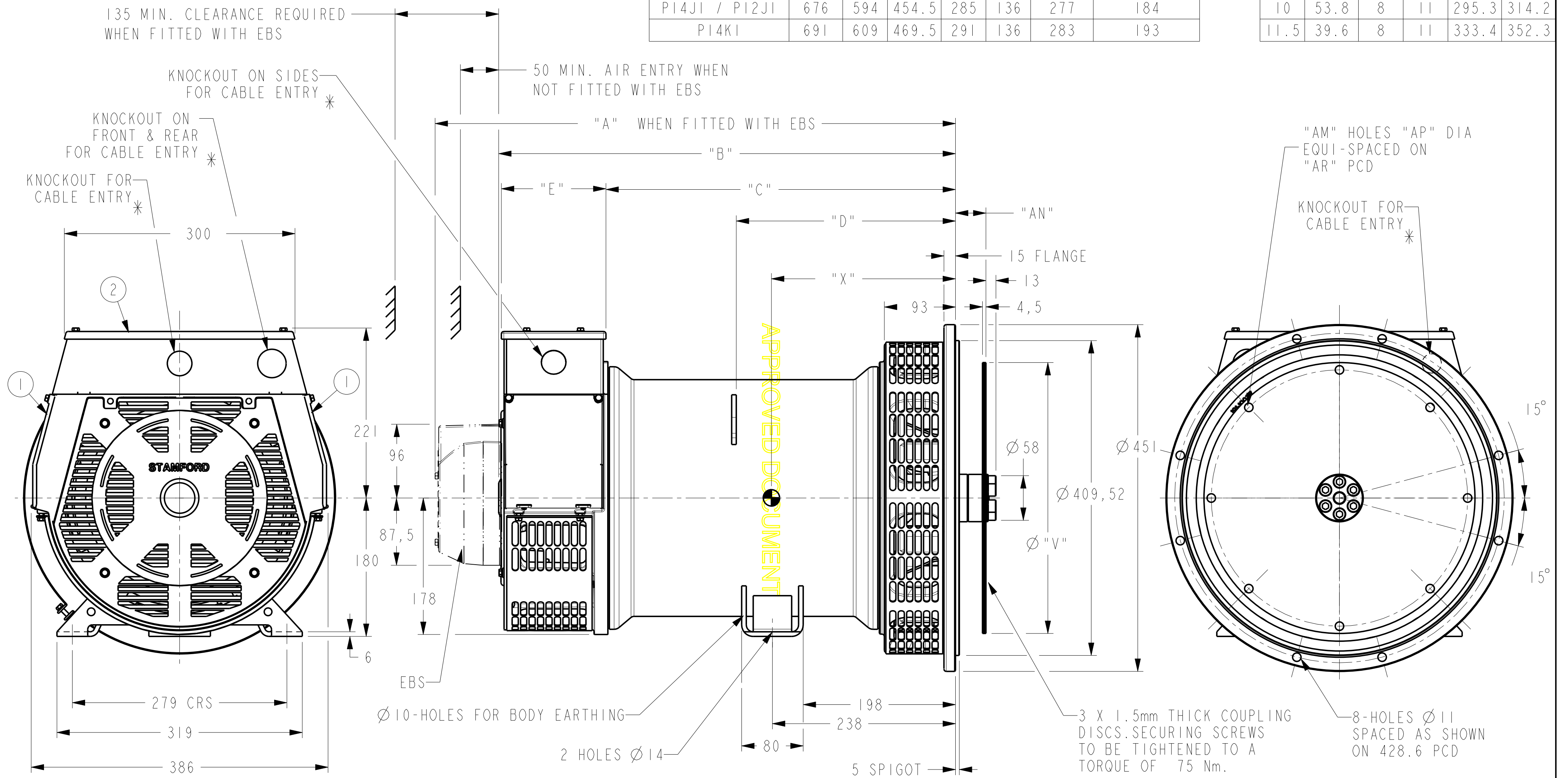


DRG. SIZE C	REL. PHASE P	PART No 19-1013	ISSUE C
----------------	-----------------	--------------------	------------

IF IN DOUBT-ASK
DO NOT SCALE

DIMENSIONS							
FRAME	"A"	"B"	"C"	"D"	"E"	"X"	NETT WT. (Kg)
PI4HI / PI2HI	646	564	424.5	270	136	262	172.5
PI4JI / PI2JI	676	594	454.5	285	136	277	184
PI4KI	691	609	469.5	291	136	283	193

COUPLING DISC					
SAE	"AN"	"AM"	"AP"	"AR"	"V"
8	62	6	11	244.5	263.4
10	53.8	8	11	295.3	314.2
11.5	39.6	8	11	333.4	352.3

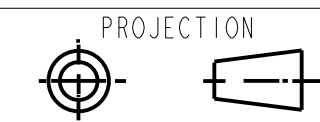


- ① -REMOVABLE COVER FOR ACCESS TO ELECTRONIC CONTROL
- ② -REMOVABLE COVER FOR ACCESS TO MAIN TERMINALS
- * FOR KNOCKOUT DETAILS REFER TERMINAL BOX DRAWING

CONFIDENTIAL PROPERTY OF
CUMMINS GENERATOR TECHNOLOGIES LTD.

PI H/J/K
I- BEARING ALTERNATOR
SAE 3 ADAPTOR
SAE 8 /10 & 11,5 COUPLING

DIMENSIONS IN MILLIMETRES
(MM) AT 20°C



UNLIMITED DIMS ± --

DRAWN	DW	7.05.07
CHECKED	DW	17/3/08
APPROVED	SMH	17/3/08

DRG. SIZE C	SCALE 3:10
REL. PHASE P	PART No 19-1013
PRO/ENGINEER	ISSUE C
SHEET 1 OF 1 SHEETS	

MOD.	ISSUE	DRAWN	DATE	MODIFICATION
4-9346-30	C	SMJ	21.01.08	NOTE ADDED FOR KNOCKOUT DETAILS
4-9111-08	B	DW	9/7/07	ADDED 2-POLES TO TABLE
4-8440-62	A	DW	7.05.07	ORIGINAL ISSUE