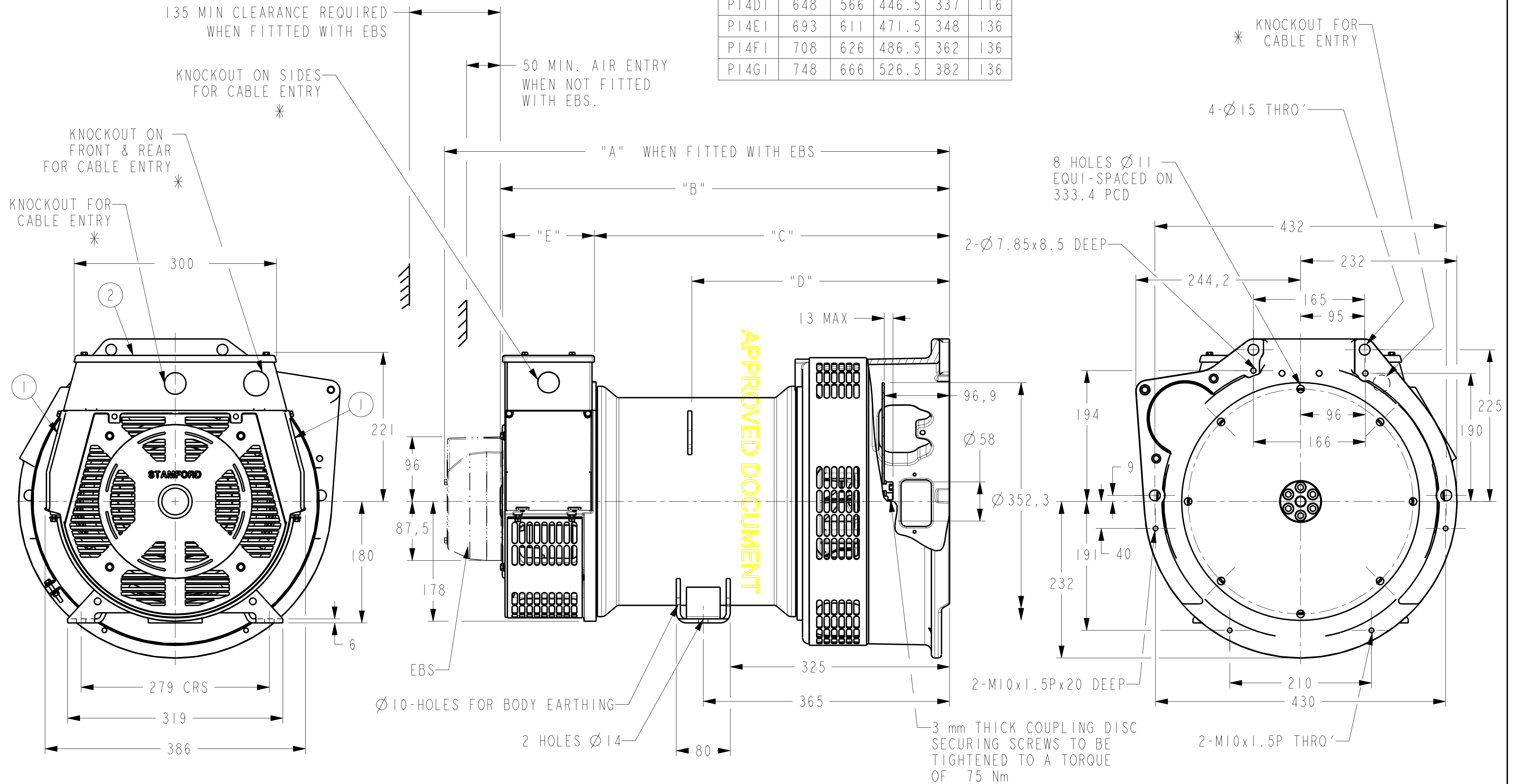


|                |                 |                    |            |
|----------------|-----------------|--------------------|------------|
| DRG. SIZE<br>C | REL. PHASE<br>P | PART No<br>19-1041 | ISSUE<br>B |
|----------------|-----------------|--------------------|------------|

IF IN DOUBT-ASK  
DO NOT SCALE

| DIMENSIONS |     |     |       |     |     |
|------------|-----|-----|-------|-----|-----|
| FRAME      | "A" | "B" | "C"   | "D" | "E" |
| PI4DI      | 648 | 566 | 446.5 | 337 | 116 |
| PI4EI      | 693 | 611 | 471.5 | 348 | 136 |
| PI4FI      | 708 | 626 | 486.5 | 362 | 136 |
| PI4GI      | 748 | 666 | 526.5 | 382 | 136 |



- ① -REMOVABLE COVER FOR ACCESS TO ELECTRONIC CONTROL
- ② -REMOVABLE COVER FOR ACCESS TO MAIN TERMINALS
- \* FOR KNOCKOUT DETAILS REFER TERMINAL BOX DRAWING

| MOD.      | ISSUE | DRAWN | DATE     | MODIFICATION                    |
|-----------|-------|-------|----------|---------------------------------|
| 4-9346-30 | B     | SMJ   | 21.01.08 | NOTE ADDED FOR KNOCKOUT DETAILS |
| 4-9111-31 | A     | SMJ   | 13.06.07 | ORIGINAL ISSUE                  |

|   |  |  |  |  |  |   |  |  |
|---|--|--|--|--|--|---|--|--|
| <b>CONFIDENTIAL</b>                       |  |  | PROPERTY OF<br>CUMMINS GENERATOR TECHNOLOGIES LTD. |  |  | PI D/E/F/G<br>I- BEARING ALTERNATOR<br>AIFO ADAPTOR<br>SAE 11.5 COUPLING DISC |  |  |
| DIMENSIONS IN MILLIMETRES<br>(MM) AT 20°C |  |  | PROJECTION<br>                                     |  |  | DRG. SIZE<br>C  |  |  |
| UNLIMITED DIMS ± --                       |  |  | DRAWN SMJ 13.06.07                                 |  |  | SCALE 3:10  |  |  |
|   |  |  | CHECKED DW 17/3/08                                 |  |  | PART No 19-1041   |  |  |
|   |  |  | APPROVED SMH 17/3/08                               |  |  | ISSUE B   |  |  |
|   |  |  | Pro/ENGINEER                                       |  |  | SHEET 1 OF 1 SHEETS   |  |  |