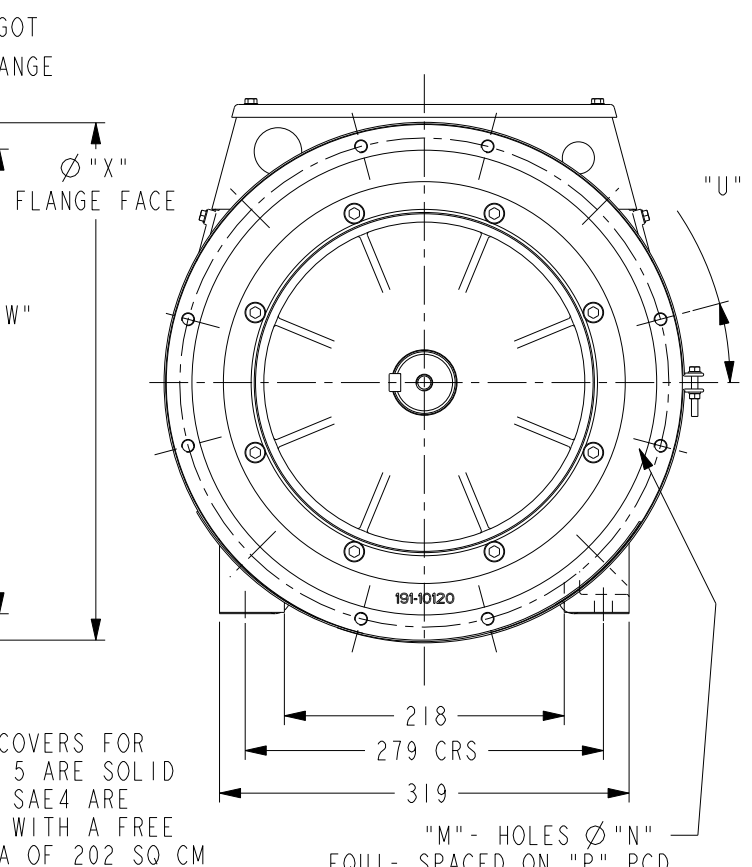
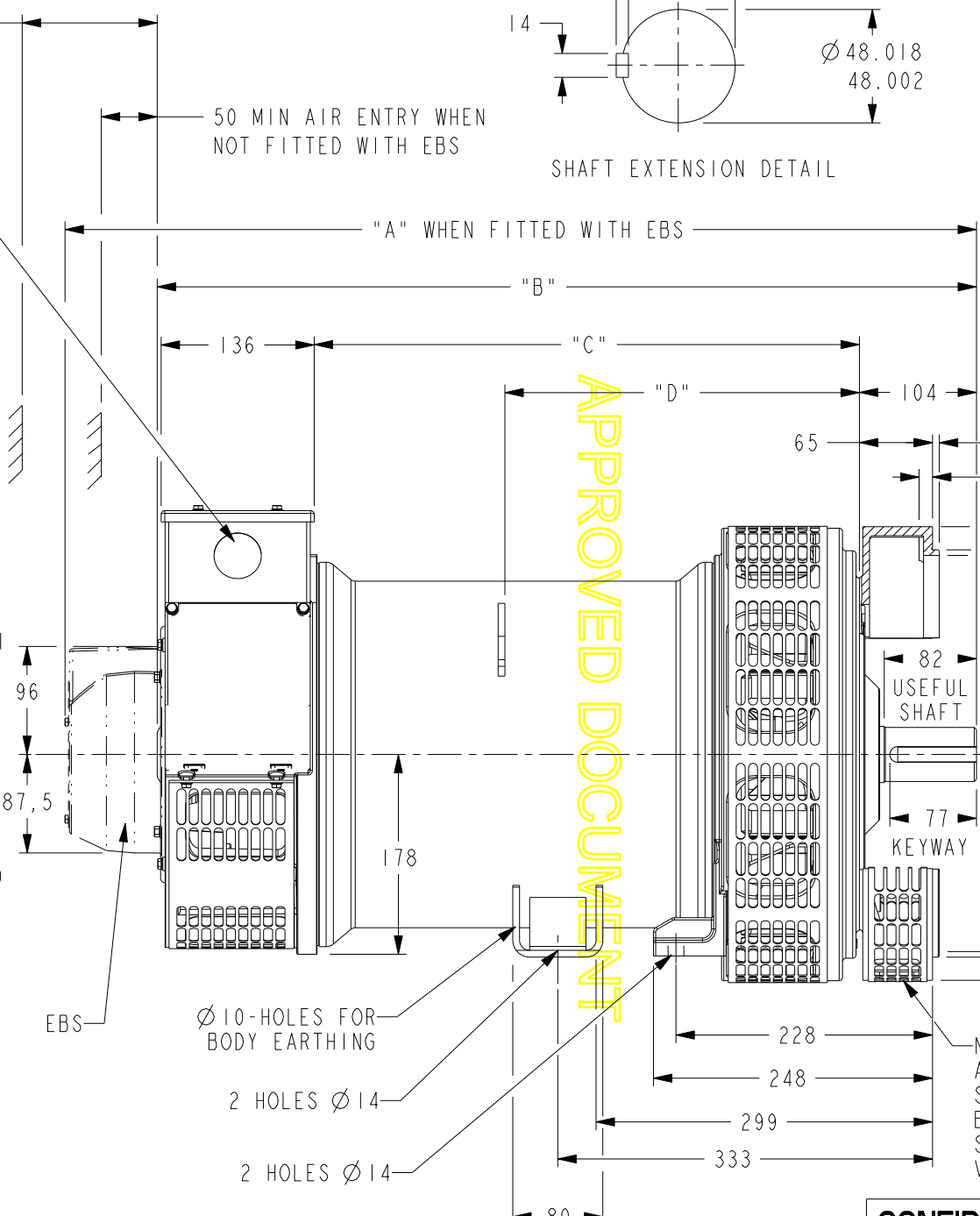
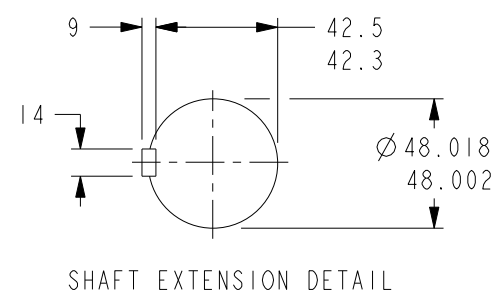
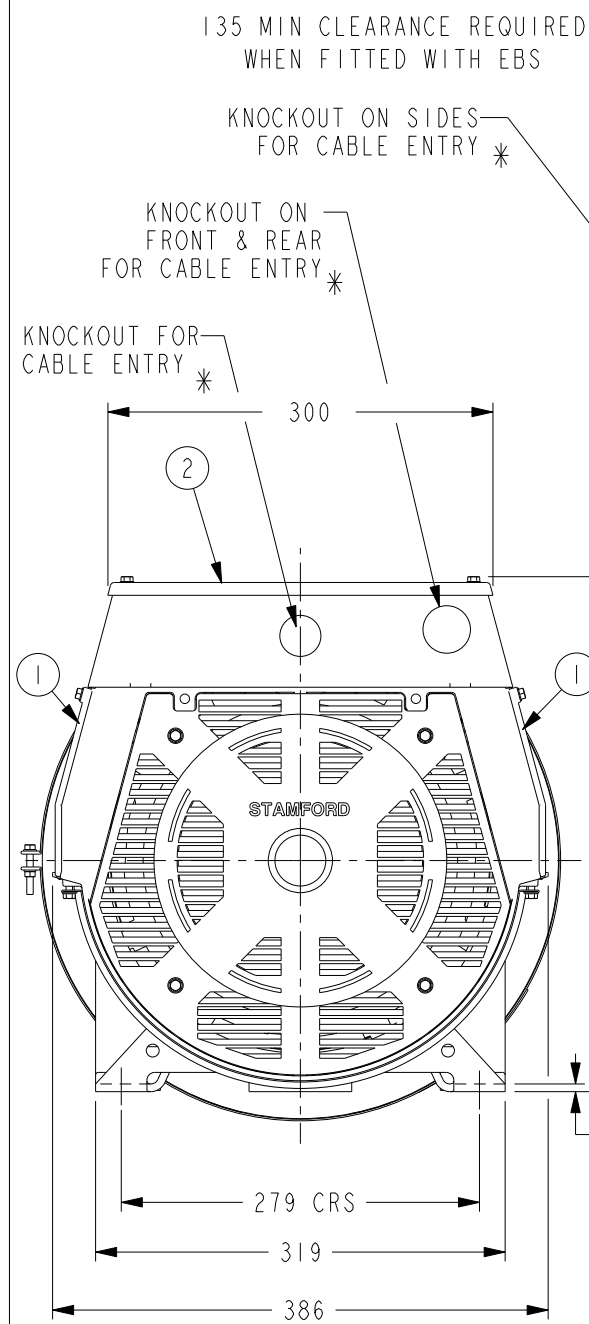


DRG. SIZE C	REL. PHASE P	PART No 19-1048	ISSUE C
----------------	-----------------	--------------------	------------

IF IN DOUBT-ASK  
DO NOT SCALE

DIMENSIONS					
FRAME	"A"	"B"	"C"	"D"	NETT WT. (Kg)
PI4H2 / PI2HS	780	698	455	300	182
PI4J2 / PI2J2	810	728	485	315	193
PI4K2	825	743	500	321	202

ADAPTOR DIMENSIONS							
SAE	"M"	"N"	"P"	"U"	"V"	"W"	"X"
2	12	11	466.7	15°	432	447.6	495
3	12	11	428.6	15°	396	409.5	451
4	12	11	381.0	15°	352	361.9	403
5	8	11	333.3	22.5°	301	314.3	356



APPROVED DOCUMENT

- ① -REMOVABLE COVER FOR ACCESS TO ELECTRONIC CONTROL
- ② -REMOVABLE COVER FOR ACCESS TO MAIN TERMINALS
- \* FOR KNOCKOUT DETAILS REFER TERMINAL BOX DRAWING

NOTE:  
ADAPTOR COVERS FOR  
SAE2,3 & 5 ARE SOLID  
BUT! FOR SAE4 ARE  
SCREENED WITH A FREE  
VENT AREA OF 202 SQ CM

MOD.	ISSUE	DRAWN	DATE	MODIFICATION
4-9346-54	C	BSR	20/02/08	NOTE FOR KNOCKOUT DETAILS ADDED
4-9346-21	B	DW	21/1/08	CORRECTED DIM 'D', UPDATED T/BOX
4-9111-10	A	BSR	09.07.07	ORIGINAL ISSUE

**CONFIDENTIAL** PROPERTY OF  
CUMMINS GENERATOR TECHNOLOGIES LTD.

DIMENSIONS IN MILLIMETRES  
(MM) AT 20°C

UNLIMITED DIMS ± --

PROJECTION

PI H/J/K  
2-BRG ALTERNATOR  
WITH COUPLING ADAPTOR

DRG. SIZE C	SCALE 3:10
DRAWN BSR 09.07.07	PART No 19-1048
CHECKED DW 21/1/08	ISSUE C
APPROVED SMH 21/1/08	SHEET 1 OF 1 SHEETS