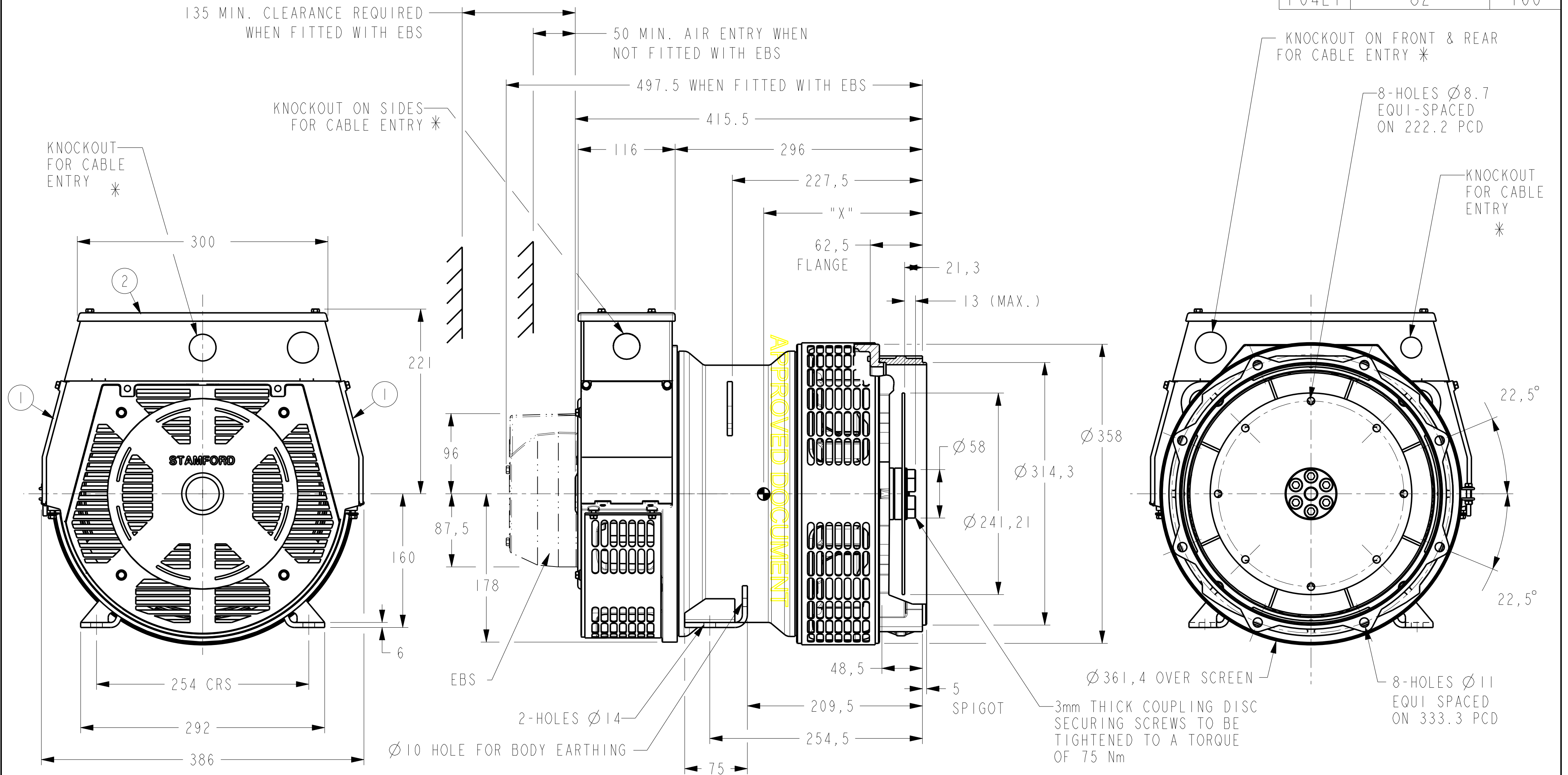


DRG. SIZE C	REL. PHASE P	PART No 19-1058	ISSUE B
----------------	-----------------	--------------------	------------

IF IN DOUBT-ASK
DO NOT SCALE

FRAME	NETT WT. (Kg)	X
P04DI	77	165
P04EI	82	160



- ① - REMOVABLE COVERS FOR ACCESS TO ELECTRONIC CONTROL
- ② - REMOVABLE COVER FOR ACCESS TO MAIN TERMINALS
- * FOR KNOCKOUT DETAILS REFER TERMINAL BOX DRAWING

CONFIDENTIAL	PROPERTY OF CUMMINS GENERATOR TECHNOLOGIES LTD.		POD/E 4-POLE 1-BEARING ALTERNATOR SAE 5 ADAPTOR+51.5 SPACER SAE 7.5 COUPLING	
	DIMENSIONS IN MILLIMETRES (MM) AT 20°C		PROJECTION 	
UNLIMITED DIMS ± --	DRAWN	DW	20/7/07	DRG. SIZE C
	CHECKED	DW	17/3/08	SCALE 3:10
	APPROVED	SMH	17/3/08	PART No 19-1058
			REL. PHASE P	ISSUE B
			Pro/ENGINEER	SHEET 1 OF 1 SHEETS

4-9346-30	B	BJ	22/02/08	NOTES FOR KNOCKOUT DETAILS ADDED
4-9111-26	A	DW	20/7/07	ORIGINAL ISSUE
MOD.	ISSUE	DRAWN	DATE	MODIFICATION