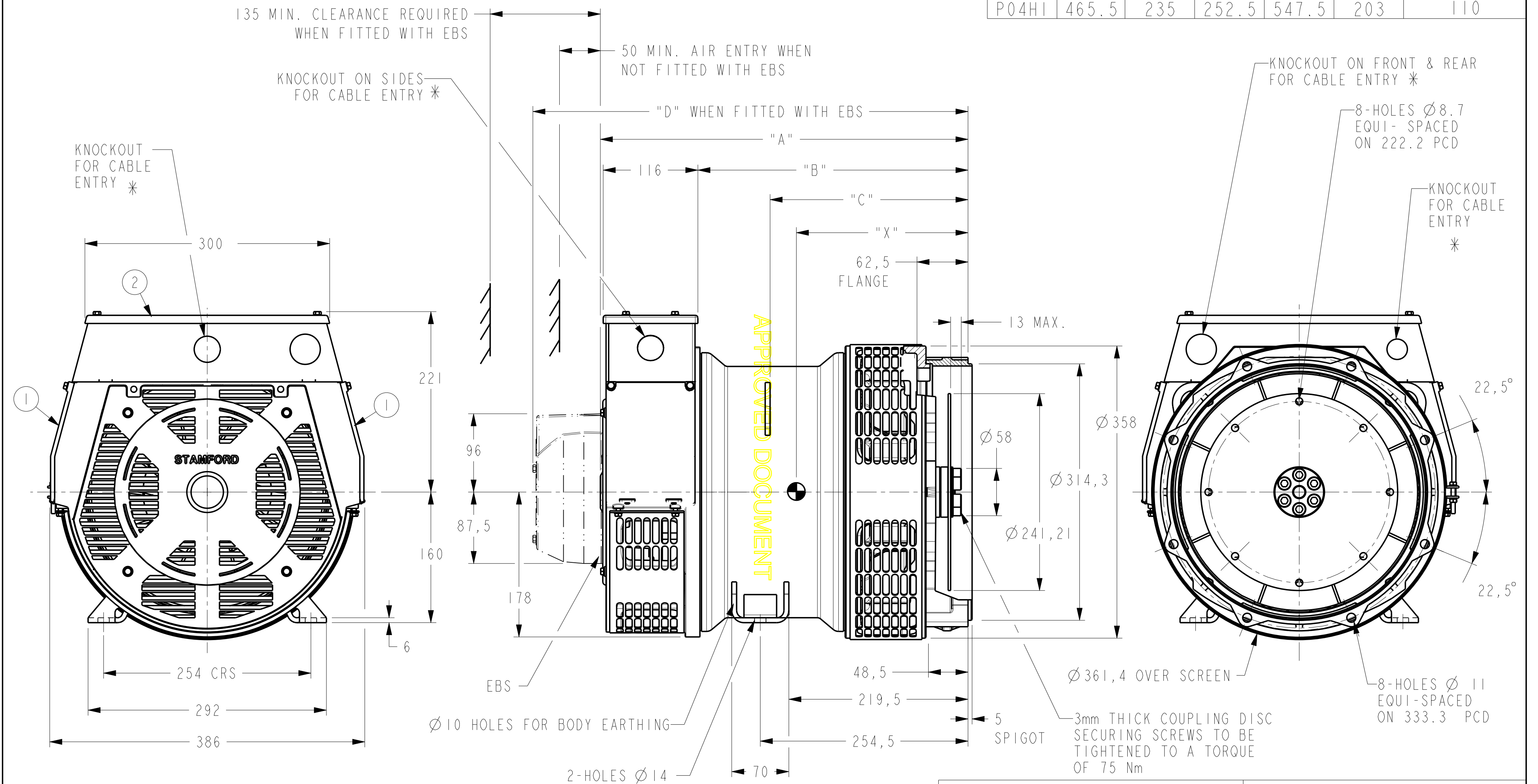


DRG. SIZE C	REL. PHASE P	PART No 19-1059	ISSUE B
----------------	-----------------	--------------------	------------

IF IN DOUBT-ASK
DO NOT SCALE

FRAME	"A"	"B"	"C"	"D"	"X"	NETT WT. (Kg)
P04FI	450.5	220	242.5	532.5	200	95
P04GI	450.5	220	242.5	532.5	193	100
P04HI	465.5	235	252.5	547.5	203	110



- ① - REMOVABLE COVERS FOR ACCESS TO ELECTRONIC CONTROL
- ② - REMOVABLE COVER FOR ACCESS TO MAIN TERMINALS
- * FOR KNOCKOUT DETAILS REFER TERMINAL BOX DRAWING

CONFIDENTIAL		PROPERTY OF CUMMINS GENERATOR TECHNOLOGIES LTD.		P0 F/G/H 4-POLE 1-BEARING ALTERNATOR SAE 5 ADAPTOR+51.5 SPACER SAE 7.5 COUPLING	
DIMENSIONS IN MILLIMETRES (MM) AT 20°C		PROJECTION 		DRG. SIZE C	SCALE 3:10
UNLIMITED DIMS ±	--	DRAWN DW	20/07/07	REL. PHASE P	PART No 19-1059
		CHECKED DW	17/3/08	PRO/ENGINEER	ISSUE B
		APPROVED SMH	17/3/08	SHEET 1 OF 1 SHEETS	

MOD.	ISSUE	DRAWN	DATE	MODIFICATION
4-9346-30	B	BJ	22/02/08	NOTES FOR KNOCKOUT DETAILS ADDED
4-9111-26	A	DW	20/07/07	ORIGINAL ISSUE