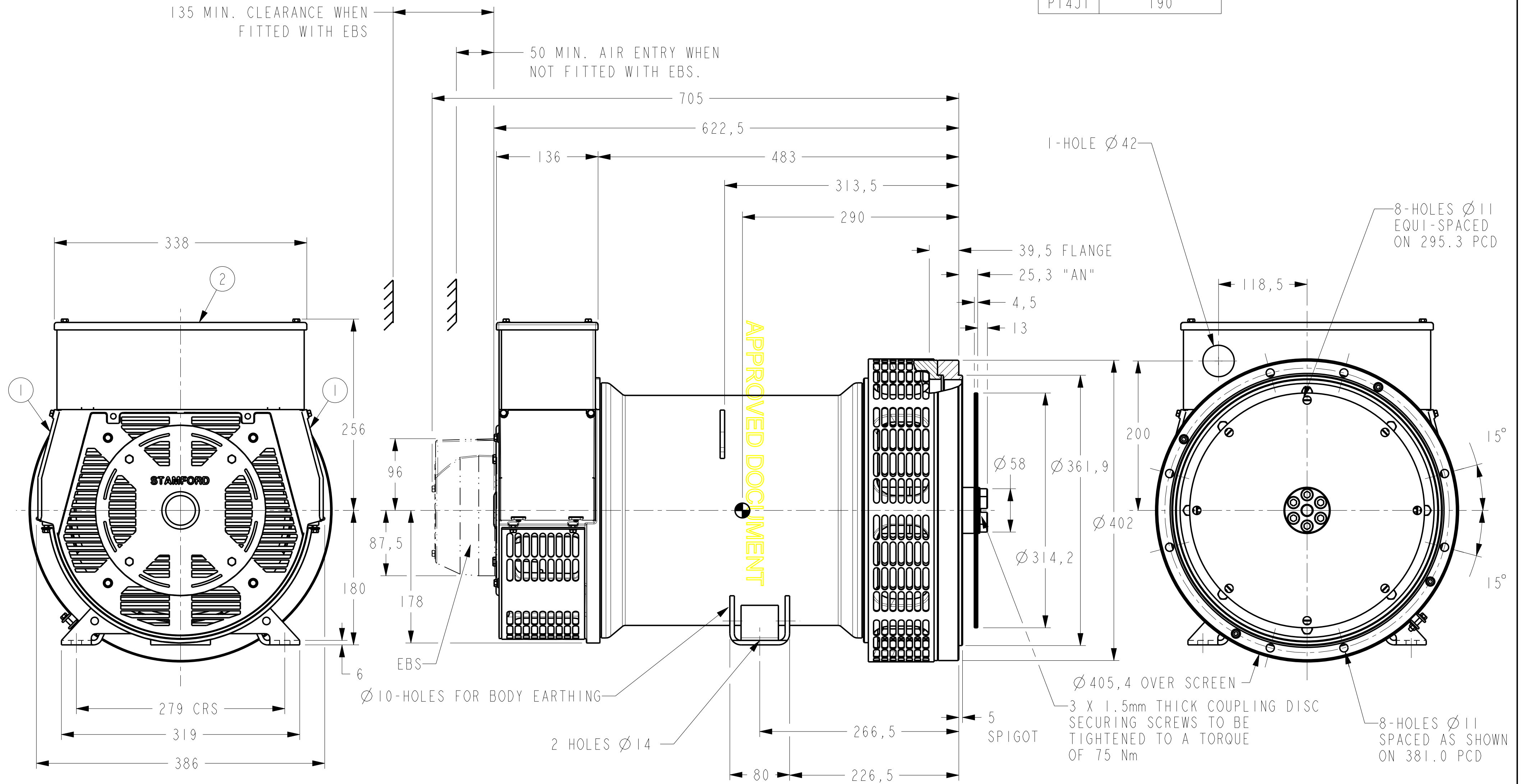


DRG. SIZE C	REL. PHASE P	PART No 19-1068	ISSUE D
----------------	-----------------	--------------------	------------

IF IN DOUBT-ASK
DO NOT SCALE

FRAME	NETT WT. (Kg)
PI4JI	190



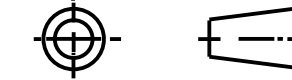
- ① -REMOVABLE COVER FOR ACCESS TO ELECTRONIC CONTROL
- ② -REMOVABLE COVER FOR ACCESS TO MAIN TERMINALS

MOD.	ISSUE	DRAWN	DATE	MODIFICATION
4-9346-46	D	SMJ	07/02/08	REPLACED ADAPTOR WITH ADAPTOR & RING, DIMENSION 39.5 WAS 11.
4-9346-09	C	AV	11/12/07	TERMINAL BOX CHANGED - DIMS 338, 256 WERE 300, 220 - SPACER REPLACED BY EXTENDED ADAPTOR
4-9111-42	B	DW	4/9/07	CHANGED COUPLING DISC FROM 1 X 3mm THK TO 3 X 1.5mm THK
4-9111-29	A	DW	24/07/07	ORIGINAL ISSUE

CONFIDENTIAL PROPERTY OF
CUMMINS GENERATOR TECHNOLOGIES LTD.

DIMENSIONS IN MILLIMETRES
(MM) AT 20°C

PROJECTION



UNLIMITED DIMS ± --

DRAWN	DW	24/07/07
CHECKED	AV	11/12/07
APPROVED	SMH	07/02/08

PI J
I- BEARING ALTERNATOR
SAE 4 ADAPTOR - 42 DIA HOLE T/BOX
SAE 10 COUPLING WITH 25.3 "AN"
TO SUIT KOMATSU 4095L

DRG. SIZE C	SCALE 3:10
REL. PHASE P	PART No 19-1068
PRO/ENGINEER	ISSUE D
SHEET 1 OF 1 SHEETS	