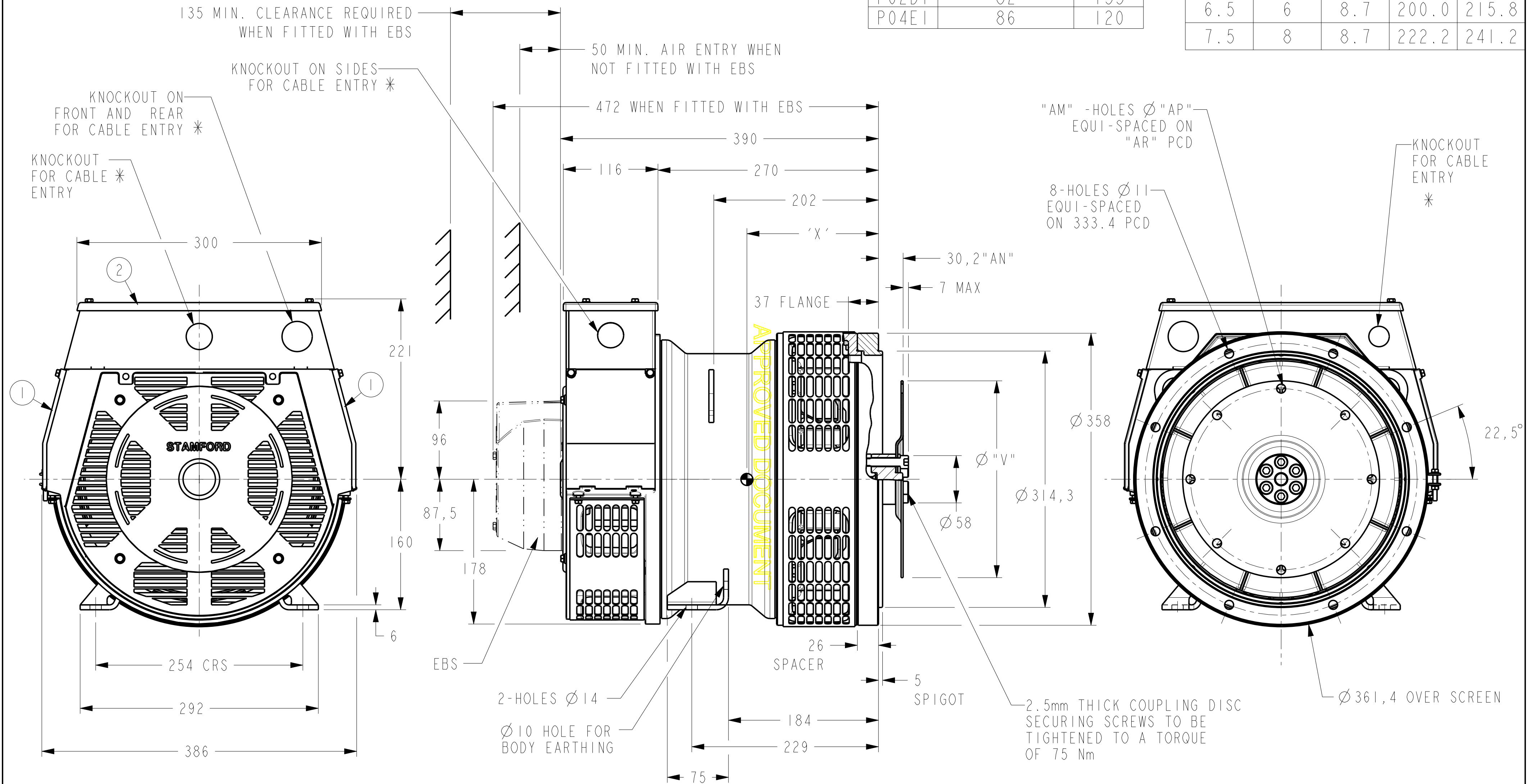


DRG. SIZE C	REL. PHASE P	PART No 19-1086	ISSUE B
----------------	-----------------	--------------------	------------

IF IN DOUBT-ASK
DO NOT SCALE

FRAME	NETT WT. (Kg)	X
P04DI	81	135
P02DI	82	133
P04EI	86	120

COUPLING DISC				
SAE	"AM"	"AP"	"AR"	"V"
6.5	6	8.7	200.0	215.8
7.5	8	8.7	222.2	241.2

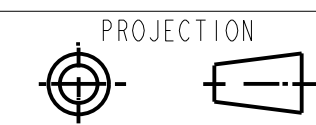


- ① - REMOVABLE COVERS FOR ACCESS TO ELECTRONIC CONTROL
- ② - REMOVABLE COVER FOR ACCESS TO MAIN TERMINALS
- * FOR KNOCKOUT DETAILS REFER TERMINAL BOX DRAWING

CONFIDENTIAL PROPERTY OF
CUMMINS GENERATOR TECHNOLOGIES LTD.

POD/E 4P POD 2P I-BRG ALTERNATOR
SAE 5 ADAPTOR
6.5/7.5 OFFSET COUPLING
LISTER ALPHA ENGINES ONLY

DIMENSIONS IN MILLIMETRES
(MM) AT 20°C



UNLIMITED DIMS ± --

DRAWN	DW	10/10/07
CHECKED	DW	17/3/08
APPROVED	SMH	17/3/08

DRG. SIZE C	SCALE 3:10
REL. PHASE P	PART No 19-1086
PRO/ENGINEER	ISSUE B
SHEET 1 OF 1 SHEETS	

4-9346-30	B	BJ	22/02/08	NOTES FOR KNOCKOUT DETAILS ADDED
4-9111-64	A	DW	10/10/07	ORIGINAL ISSUE
MOD.	ISSUE	DRAWN	DATE	MODIFICATION