

DRG. SIZE C	REL. PHASE P	PART No 19-1099	ISSUE B
----------------	-----------------	--------------------	------------

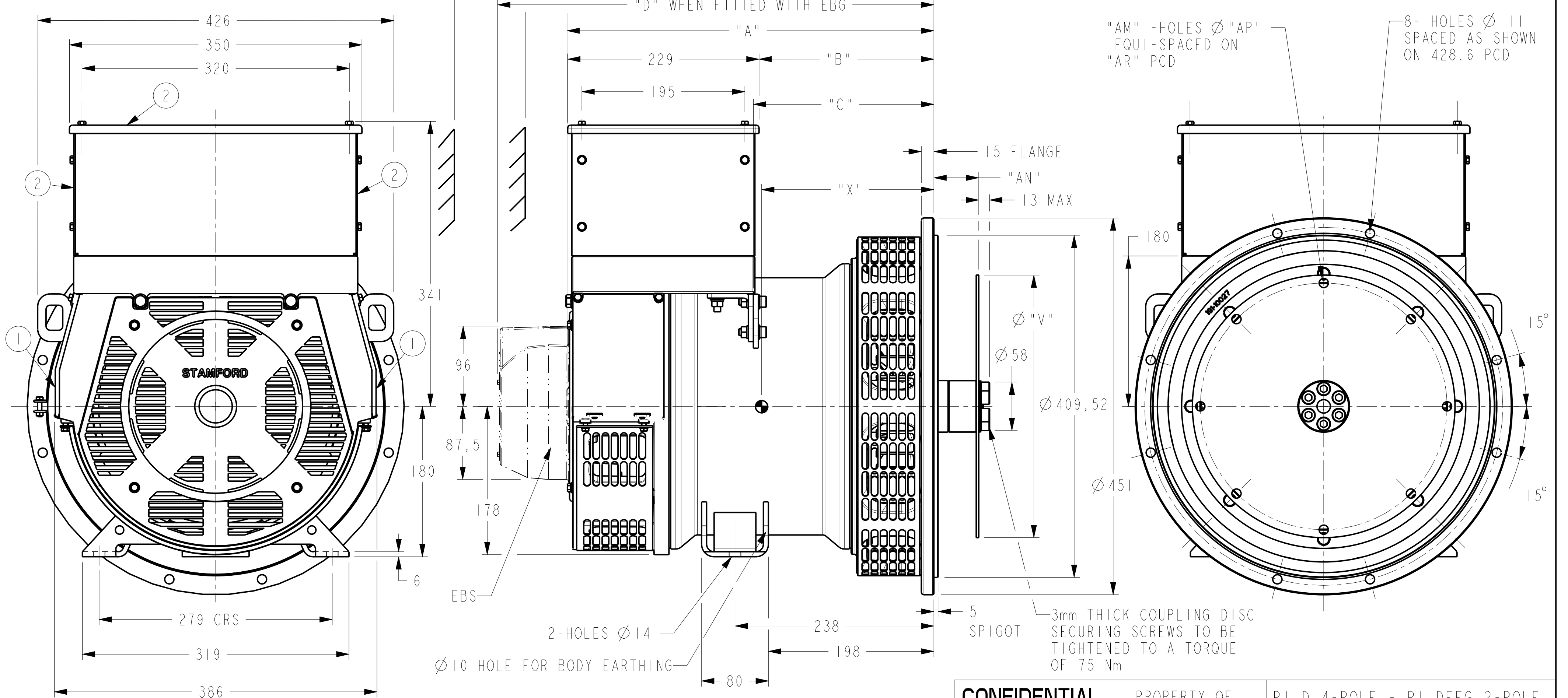
IF IN DOUBT-ASK
DO NOT SCALE

FRAME	A	B	C	D	X	NETT WT. (Kg)
PI2DI	439	209	216	521	202	122
PI4DI	439	209	216	521	202	122
PI2EI	464	234	227	546	215	138
PI2FI	479	249	241	561	230	147
PI2GI	519	289	261	601	250	163

COUPLING DISC					
SAE	"AN"	"AM"	"AP"	"AR"	"V"
8	62	6	11	244.5	263.4
10	53.8	8	11	295.3	314.2
11.5	39.6	8	11	333.4	352.3

135 MIN. CLEARANCE REQUIRED
WHEN FITTED WITH EBS

50 MIN. AIR ENTRY WHEN
NOT FITTED WITH EBS



- ① - REMOVABLE COVERS FOR ACCESS TO ELECTRONIC CONTROL
- ② - REMOVABLE COVER FOR ACCESS TO MAIN TERMINALS

CONFIDENTIAL		PROPERTY OF CUMMINS GENERATOR TECHNOLOGIES LTD.		PI D 4-POLE - PI DEFG 2-POLE 1-BEARING ALTERNATOR SAE No 3 ADAPTOR SAE 8,10 AND 11.5 COUPLONG LARGE TERMINAL BOX REMOVABLE SIDE PANELS	
DIMENSIONS IN MILLIMETRES (MM) AT 20°C		PROJECTION 		DRG. SIZE C	
UNLIMITED DIMS ± --		DRAWN DW 15/10/07		SCALE 3:10	
		CHECKED DW 4/12/07		PART No 19-1099	
		APPROVED DPC 4/12/07		ISSUE B	
		Pro/ENGINEER		SHEET 1 OF 1 SHEETS	

MOD.	ISSUE	DRAWN	DATE	MODIFICATION
4-9346-01	B	DW	4/12/07	ADDED PI E/F/G 2-POLE
4-9111-66	A	DW	15/10/07	ORIGINAL ISSUE