

DRG. SIZE C	REL. PHASE P	PART No 19-1101	ISSUE A
----------------	-----------------	--------------------	------------

IF IN DOUBT-ASK
DO NOT SCALE

FRAME	A	B	C	D	X	NETT WT. (Kg)
P02E1	399	169	197	481	160	86
P04F1	399	169	197	481	157	91
P02F1	399	169	197	481	155	92
P04G1	399	169	197	481	149	98
P02G1	414	184	207	496	169	97
P04H1	414	184	207	496	159	109

COUPLING DISC					
SAE	"AN"	"AM"	"AP"	"AR"	"V"
8	62	6	11	244.5	263.4
10	53.8	8	11	295.3	314.2
11.5	39.6	8	11	333.4	352.3

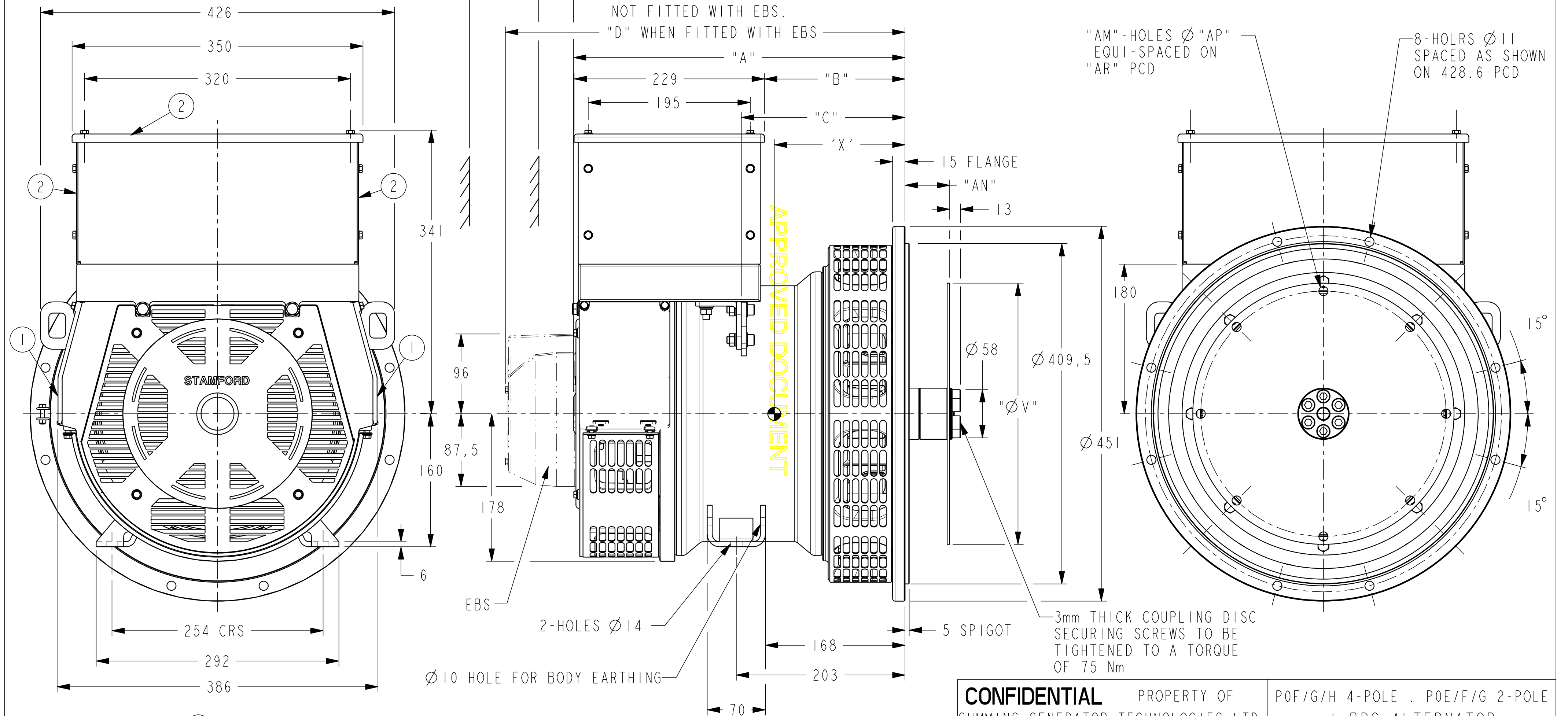
135 MIN CLEARANCE REQUIRED
WHEN FITTED WITH EBS.

50 MIN AIR ENTRY WHEN
NOT FITTED WITH EBS.

"D" WHEN FITTED WITH EBS

"AM"-HOLES Ø "AP"
EQUI-SPACED ON
"AR" PCD

8-HOLRS Ø11
SPACED AS SHOWN
ON 428.6 PCD



① - REMOVABLE COVERS FOR ACCESS TO ELECTRONIC CONTROL

② - REMOVABLE COVERS FOR ACCESS TO MAIN TERMINALS

CONFIDENTIAL PROPERTY OF
CUMMINS GENERATOR TECHNOLOGIES LTD.

P0F/G/H 4-POLE . P0E/F/G 2-POLE
1-BRG ALTERNATOR
SAE 3 ADAPTOR

SAE 8/10 & 11.5 COUPLING
LARGE T/BOX - REMOVABLE SIDE PANELS

DIMENSIONS IN MILLIMETRES (MM) AT 20°C			PROJECTION 	
DRAWN	DW	15/10/07	DRG. SIZE C	SCALE 3:10
CHECKED	DW	15/10/07	REL. PHASE P	PART No 19-1101
APPROVED	DPC	15/10/07	Pro/ENGINEER	ISSUE A
UNLIMITED DIMS ± --			SHEET 1 OF 1 SHEETS	

4-9111-66	A	DW	15/10/07	ORIGINAL ISSUE
MOD.	ISSUE	DRAWN	DATE	MODIFICATION