

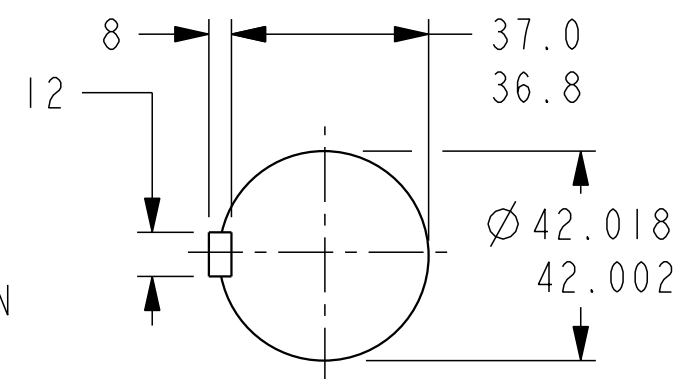
DRG. SIZE C	REL. PHASE P	PART No 19-1111	ISSUE B
----------------	-----------------	--------------------	------------

IF IN DOUBT-ASK
DO NOT SCALE

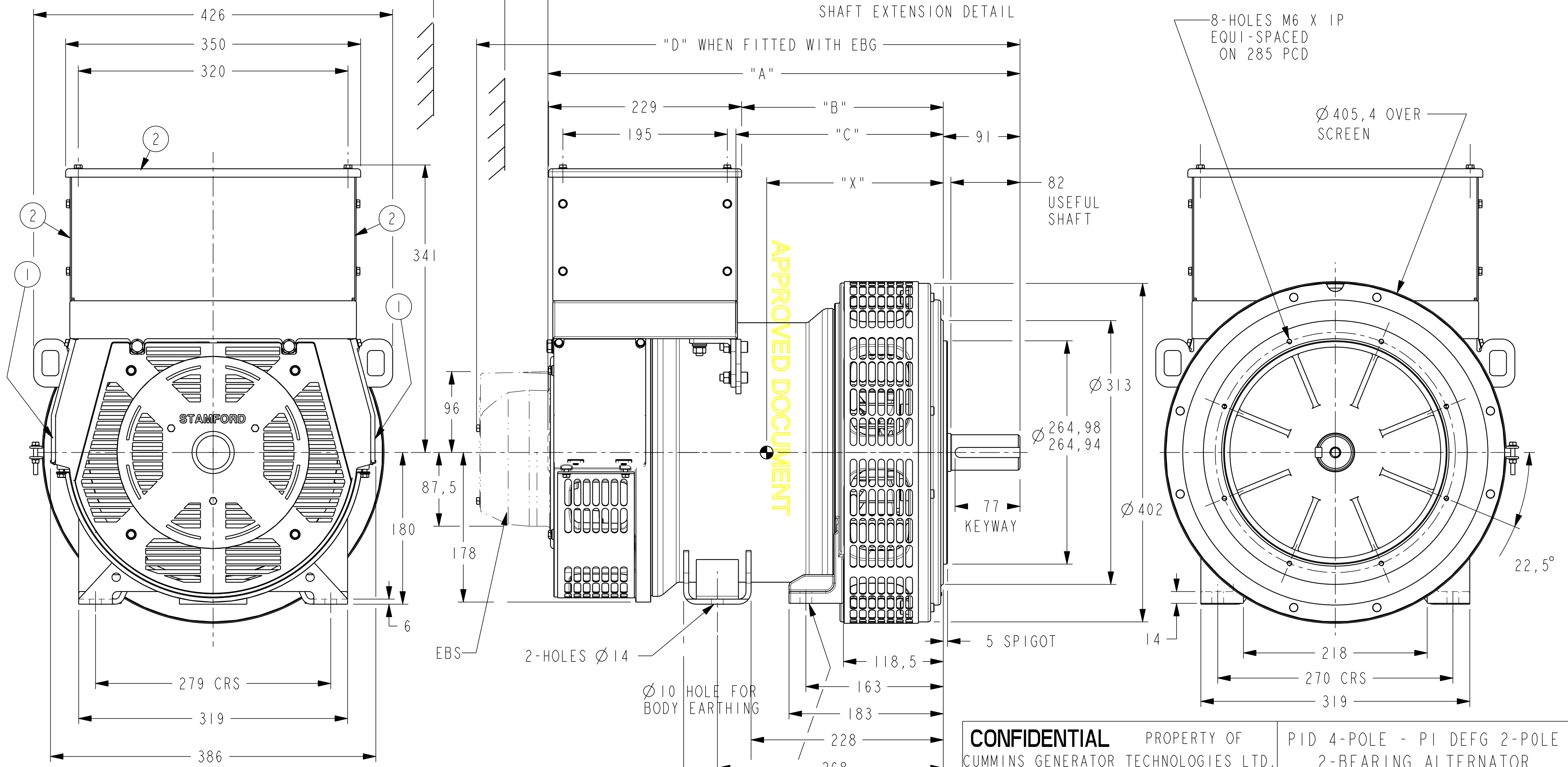
136 MIN. CLEARANCE REQUIRED
WHEN FITTED WITH EBS.

51 MIN. AIR ENTRY WHEN
NOT FITTED WITH EBS

FRAME	A	B	C	D	X	NETT WT. (Kg)
PI2DI	560	239	246	643	202	126
PI4DI	560	239	246	643	202	126
PI2EI	585	264	257	668	215	142
PI2FI	600	279	271	683	230	150
PI2GI	640	319	291	723	250	167



SHAFT EXTENSION DETAIL



APPROVED DOCUMENT

- ① - REMOVABLE COVERS FOR ACCESS TO ELECTRONIC CONTROL
- ② - REMOVABLE COVER FOR ACCESS TO MAIN TERMINALS

CONFIDENTIAL		PROPERTY OF CUMMINS GENERATOR TECHNOLOGIES LTD.		PID 4-POLE - PI DEFG 2-POLE 2-BEARING ALTERNATOR LARGE TERMINAL BOX REMOVABLE SIDE PANELS	
DIMENSIONS IN MILLIMETRES (MM) AT 20°C		PROJECTION 		DRG. SIZE C	SCALE 3:10
UNLIMITED DIMS ±	--	DRAWN DW	5/11/07	REL. PHASE P	PART No 19-1111
		CHECKED DW	27/2/09	PRO/ENGINEER	ISSUE B
		APPROVED JB	27/2/09	SHEET 1 OF 1 SHEETS	

MOD.	ISSUE	DRAWN	DATE	MODIFICATION
4-9667-48	B	DW	27/2/09	PI2E - DIMENSION "D" WAS 658 NOW 668
4-9111-81	A	DW	5/11/07	ORIGINAL ISSUE